

RECOMMENDED PANEL MOUNTING

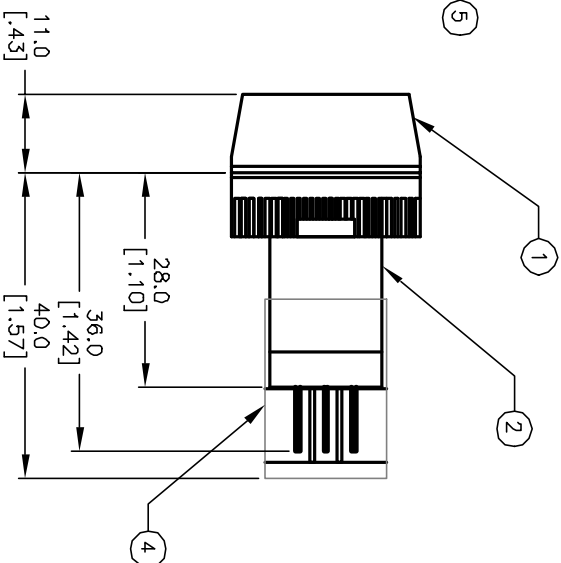
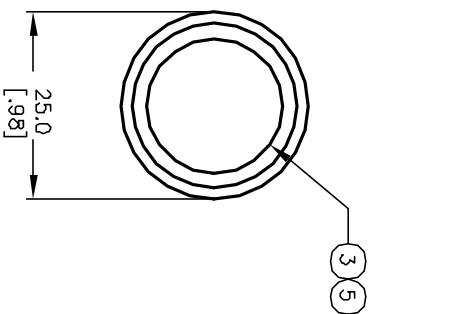
1 o l o 2  
3 o o 4  
a-(L)-b (+)

SPST  
CONTACT CONFIGURATION

NOTES:

1. ALL DIMENSIONS IN MM
2. GENERAL TOLERANCE: X.X=±0.4  
X.XX=±0.25
3. RATINGS: 5A @250V AC;  
8A @125V AC
4. CONTACT MATERIAL:  
COPPER ALLOY W/Silver Plating
5. LAMP VOLTAGE: 6V DC

PARTS LIST		
Item	Qty.	Dwg. No. Part No.
1	1	F051702 25mm RING FOR LA SERIES
2	1	F060621 LAKOAV110 (BODY)
3	1	F060255 25mm RED LENS
4	-	SUPPLIED P16 PLASTIC TERMINAL PROTECTOR
5	1	F050417 50-004-17 (RED LED)



**E-SWITCH®**

LAK DA V11 K RED RED

REV.	ECN NO.	DESCRIPTION	DATE	CHK'D
A	12133	RELEASED FOR PRODUCTION		

TITLE	SCALE	DATE	DR	DWG	REV
LAK DA V11 K RED RED	1:1	5/9/02	CB	XF0447A	A

THE INFORMATION CONTAINED IN THIS DOCUMENT IS PROPRIETARY TO E-SWITCH AND IS NOT TO BE COPIED OR TRANSMITTED